

Ikegami

UNICAM XE

4K HDR

4K / HD Camera System

UHK-X750



The UHK-X750 is the flagship 4K/HD camera head for live and studio production with box lenses.

Sharing the CMOS sensor with the global shutter and the digital signal processing technology with the UHK-X700, the UHK-X750 brings a naturalness to the uncompromising 4K image quality. The robust housing and the optimally placed and easy-to-use switches make it comfortable for the camera operator to perform their tasks, especially live coverage with super-telephoto zoom lenses.

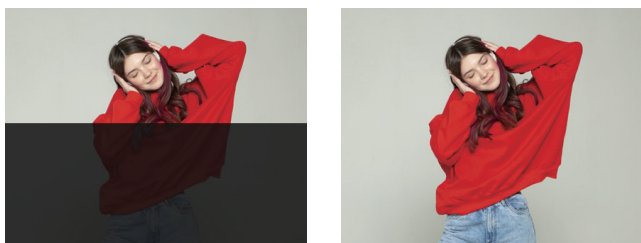
Natural Image Expressions

The 2/3-inch CMOS sensors incorporate global shutter pixel architecture, enabling the camera to capture natural images even under challenging situations. Still frame replay of fast-moving objects is free from geometric distortion.



Simulated images

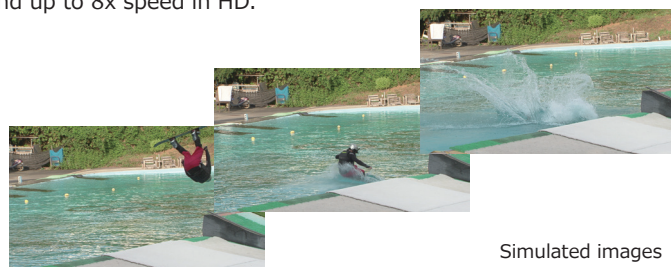
There are no flash bands when shooting under strobe lights or flashes from still cameras.



Simulated images

High Frame Rate Capturing

A choice of HFR options provide a maximum of 2x speed in 4K and up to 8x speed in HD.

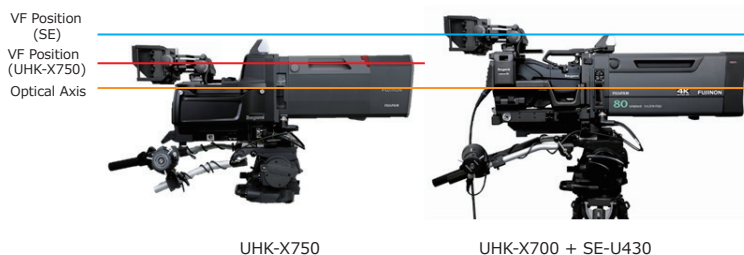


Simulated images

- Advanced-HFR: up to HD 4x
- Extended-HFR: up to 4K 2x or HD 8x

Optimal Camerawork with Box Lenses

As the VF position can be lowered and close to the optical axis of the zoom lens, the UHK-X750 provides optimal camera operation.



CCU-X100 Camera Control Unit

The CCU-X100 is a Camera Control Unit in 3U full rack width. Offering a highly versatile signal interface, the CCU-X100 fits the UHK-X700/X750 into productions of every size and complexity. With a mighty power supply, it is the perfect choice for field production purposes where greater cable length is required.



Highly Flexible System

With the 4K standard configuration, the CCU supports the UHK-X700 and the UHK-X750. As with its half-rack counterpart, a variety of options, including the 4K 2x & HD 8x HFR are available.

MoIP Interface (Option)

With an optionally available MoIP interface, the CCU-X100 can be integrated into modern IP media networks conforming to SMPTE ST.2110 and NMOS standards for maximum flexibility and interconnectivity while reducing the complexity of signal and cabling infrastructure.

4K HDR / HD SDR Simultaneous Output

The CCU-X100 has a total of 11 outputs as standard, including 4K output in 12G-SDI or 3G-SDI Quad Link and HD output in 3G-SDI/HD-SDI. Independent control optimizes the picture settings such as gamma, DTL, gamut, etc. for both 4K and the downscaled HD output system.

Full Compatibility with the existing system

The CCU-X100 in 4K/HD Multi configuration supports Ikegami's flagship 4K/HD camera heads as well as "Unicam HD" HDTV camera heads. There is no need to physically switch the connection path of both systems as they share the same SMPTE fiber receptacle.

MoIP Module in exchange for the standard 12G_OUT Module



Specifications/Ratings

UHK-X750

Specifications						
Image Sensor	3x 2/3-inch CMOS Sensor with Global Shutter					
Lens Mount	B4					
Effective Resolution	3840 (H) × 2160 (V)					
Optical Filters (Servo Controlled)	1	2	3	4	5	
	ND	CLR	1/4	1/8	1/16	1/64
	CC	3200K	4300K	6300K	Cross	Option
S/N Ratio	4K:	62dB or better		HD:	62dB or better	
Limiting Resolution	4K:	2000 TVL or more		HD:	1000 TVL or more	
Sensitivity (2000 lx, 89.9% Reflex)	4K:	F10 / 59.94p		F11 / 50p		
	HD:	F10 / 59.94p		F11 / 50p		
Gamma Curves	OFF, 0.35, 0.4, 0.45, HLG, Custom 1 - 5					

General Specifications

Ambient Temperature	Operation: -20 °C to +45 °C (-4 °F to +113 °F) Storage: -30 °C to +60 °C (-22 °F to +140 °F)
Operation Humidity	30% to 90% *non condensation
Dimensions	W 315 × H 328.5 × D 398 mm (W 12.4 × H 12.9 × D 15.7 in)
Weight	Approx. 19 kg (41.9 lbs), without Viewfinder

CCU-X100

Video I/O			
Hybrid Fiber Camera Cable	1	LEMO 3K Type (SMPTE 304M)	
Video In	RET	4× BNC	4-input or 2-input with Active Loop-through
	HD QTV	2× BNC	2-input or 1-input with Active Loop-through
	4K QTV	1× BNC	12G-SDI, OUT 3-4 of 12G OUT (Option)
	MoIP	2× SFP	10G (HD) / 25G (4K) SMPTE ST2110 Compliant (Option)
Video Out	OUT 1-4	4× BNC	4K 3G-Quad Link (2SI) or HD
	OUT 5-8	4× BNC	HD, OUT 8 is for MON Video
	12G OUT 1-4	4× BNC	4K 12G-SDI or 3G-Quad Link (2SI)
	MoIP	2× SFP	10G (HD) / 25G (4K) SMPTE ST2110 Compliant (Option)
	HD TRUNK	1× BNC	HD-SDI, OUT 5-7
	4K TRUNK	1× BNC	12G-SDI, OUT 3-4 pf 12F OUT (Option)
	REFERENCE	2× BNC	Tri Level Sync or BB, Active Loop-through
SYNC / AES	1× BNC	Tri Level Sync or Digital Audio out (AES / EBU)	

General Specifications

Dimensions	W 482.6 × H 132.6 × D 398 mm (W 19.0 × H 5.2 × D 15.7 in)
Weight	Approx. 17 kg (37.5 lbs)

Design and specifications are subject to change without notice.

Ikegami Tsushinki Co., Ltd.

■ URL: www.ikegami.co.jp/en/

■ Headquarters : 5-6-16 Ikegami, Ohta-ku, Tokyo 146-8567, Japan TEL.+81-(0)3-5700-1111 / FAX.Head Office +81-(0)3-5700-1137
 ■ Beijing Office : Tower A Room No.823-824 Jia Tai International Mansion No.41
 East Fourth Ring Road,Chaoyang District,Beijing ,China TEL / FAX.+86-10-8571-0350

Ikegami Electronics (U.S.A.), INC.

■ URL: www.ikegami.com

■ Headquarters : 300 Route 17 South, Mahwah, NJ 07430 USA TEL.+1-201-368-9171 / FAX.+1-201-569-1626

Ikegami Electronics (Europe) GmbH

■ URL: www.ikegami.de

■ Headquarters : Ikegami Strasse 1, D-41460 Neuss, Germany TEL.+49-(0)2131-1230 / FAX.+49-(0)2131-102820

Ikegami Electronics Asia Pacific Pte.Ltd.

■ URL: sg.ikegami.co.jp

■ Headquarters : 1 Tampines Central 5, #06-04 CPF Tampines Building, Singapore 529508 TEL.+65-6260-8820 / FAX.+65-6260-8896

U477A223-SELF

